

SKEE PALLETS

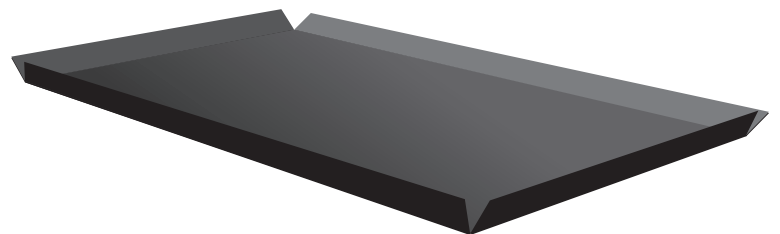
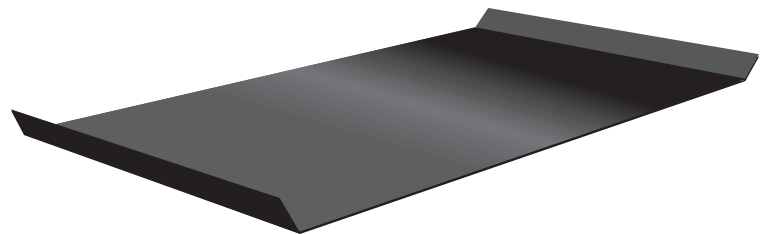
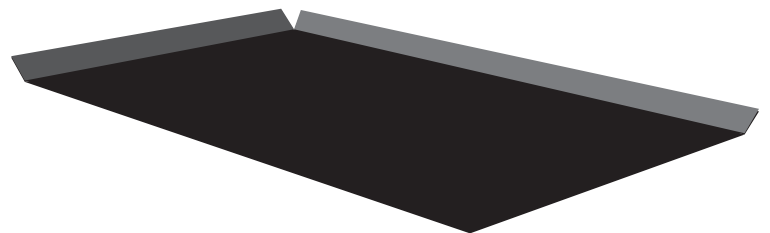
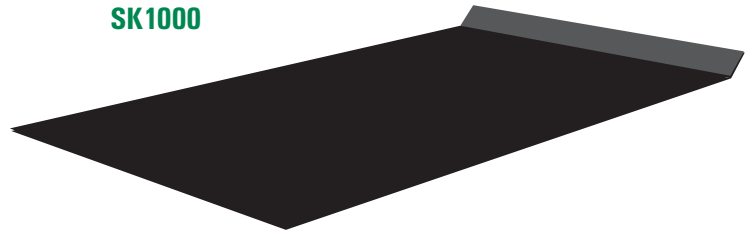
A LIGHTWEIGHT, ECONOMICAL ALTERNATIVE TO PALLETS. NO NEED FOR SPECIAL PUSH/PULL EQUIPMENT.

- Extruded high-density polyethylene
- Resistant to UV rays, cold, heat, rain
- Extended life and durability
- Sanitary—can be steam cleaned
- 100% recycled and recyclable

Specifications	
Model	SK1000
Standard size:	48 in x 40 in x 25 mils (1,219 mm x 1,016 mm x 25 mils)
Sizes available:	Length—up to 96 in (2,438 mm); Width—up to 60 in (1,542 mm); Thickness—23 to 100 mils
Weight:	1.66 lb per square ft @ 25 mils thickness (.753 kg per 929 sq cm)
Load capacity:	Up to 6000 lb (Varies by thickness)
Color:	Black
Options:	Various sizes and lib configurations

Performance characteristics may vary with applications. Loads must be evenly distributed to reach capacity. Nominal specifications are subject to change without notice.

SK1000



TransPac products are designed and manufactured to the highest standards to ensure quality, strength, and value.